

Daily Derivatives & Market Report

CONTENTS

Page No.	Particulars
2	Market Summary
3	Nifty Futures – Derivatives Snap
4	Bank Nifty Futures – Derivatives Snap
5	Activity in Nifty Options
6	What do Nifty Technical suggest
7	Derivative Analysis
8	Disclaimer

Index Trend Analysis

Pivot(Daily)	Close	S2	S1	Pivot	R1	R2	Daily	Weekly	Monthly
Nifty	10962	10843	10903	10945	11004	11047	Buy	Neutral	Buy
Sensex	36579	36195	36387	36544	36736	36893	Buy	Neutral	Buy
Nifty Futures	10965	10855	10910	10957	11011	11058	Buy	Neutral	Buy
Bank Nifty	27534	27281	27407	27515	27641	27748	Buy	Buy	Buy
CNX IT	14966	14722	14844	14972	15094	15222	Buy	Buy	Neutral
CNX Midcap	17378	17215	17297	17430	17511	17644	Neutral	Sell	Neutral
CNX Small Cap	6313	6250	6281	6333	6364	6416	Neutral	Neutral	Sell

Market Summary

Domestic Indices	Close	Points	% Chg
SENSEX	36579.0	192.4	0.5
NIFTY	10961.9	54.9	0.5
MIDCAP	14939.2	-84.2	-0.6
SMLCAP	14402.6	-102.1	-0.7
BSEFMC	11847.4	-25.4	-0.2
AUTO	19702.6	-214.7	-1.1
POWER	1940.9	-13.6	-0.7
REALTY	1824.8	-22.5	-1.2
BSE IT	14764.5	93.6	0.6
BANKEKX	30770.4	30.6	0.1
OILGAS	13673.1	94.5	0.7
METAL	11046.8	-33.6	-0.3

Currency Futures	Close	Pre. Pts	% Chg
29-Jan-19 EUR-INR	81.20	81.30	-0.12
29-Jan-19 USD-INR	71.35	71.24	0.16
29-Jan-19 GBP-INR	91.82	92.31	-0.54
29-Jan-19 JPY-INR	65.14	65.15	-0.02

Advance/ Decline	Adv	Dec	Un Ch.
NSE	552	1235	104
BSE	933	1671	169

FII/DII Capital Mkt*	Buy	Sell	Net
FII	3647	3946	(300)
DII	3317	2796	521

*NOTE: - FII AND DII data figure is provisional

Market Commentary

Rally continued on Dalal Street on Monday, with Sensex and Nifty garnering around half a percent gains each. The start of day was cautious but soon markets gained momentum, aided by Union Commerce and Civil Aviation Minister Suresh Prabhu's statement that India has the potential to be a \$5 trillion economy in the next 7-8 years. Prabhu said his department had prepared a road map to make this possible by focusing on manufacturing, service sector and agriculture. Adding more optimism on the street, central bank Governor Shaktikanta Das said that the Reserve Bank of India (RBI) will make all efforts to maintain financial stability and to facilitate enabling conditions for sustainable and robust growth. Some comfort also came with a private report that India is likely to surpass the United Kingdom in the world's largest economy rankings in 2019. The report projects real GDP growth of 1.6% for the UK, 1.7% for France and 7.6% for India in 2019.

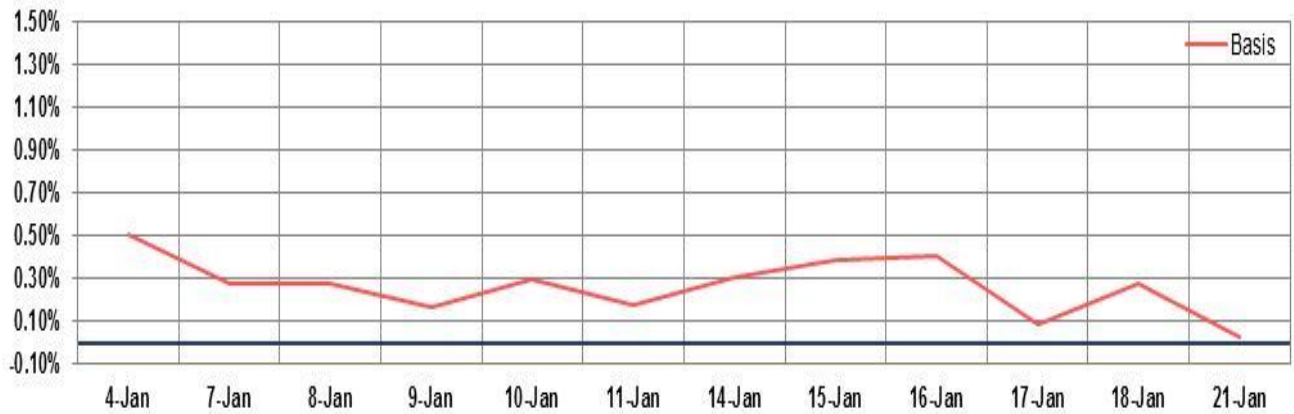
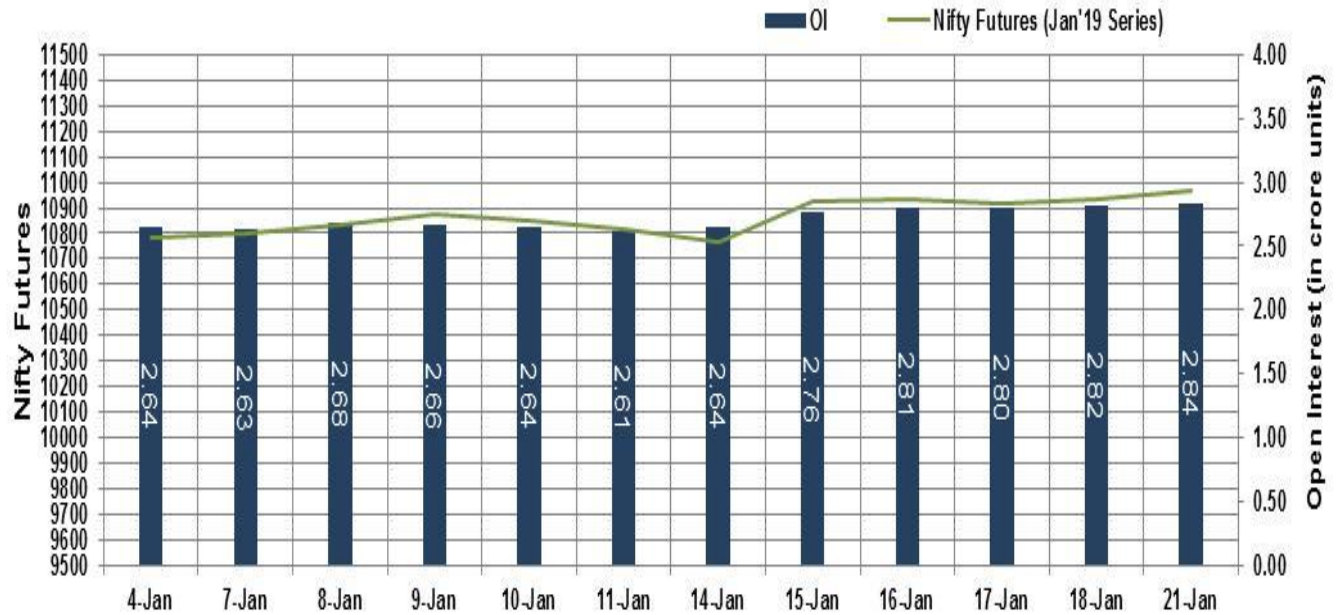
The trade remained positive for the whole day, amid RBI's report showing that the forex reserves continued its upward march and increased by \$1.267 billion to \$397.351 billion in the week to January 11, 2019, aided by a rise in core currency assets and value of gold. Traders were seen taking note of a private report stating that Indian billionaires saw their fortunes swell by Rs 2,200 crore a day last year, with the top 1% of the country's richest getting richer by 39% as against just 3% increase in wealth for the bottom-half of the population.

Market Turnover & FII Derivative Data

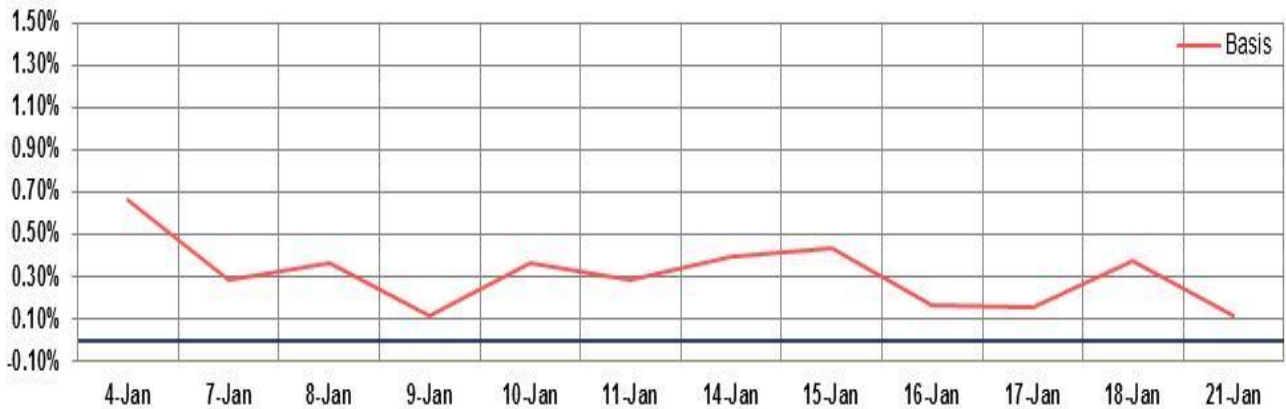
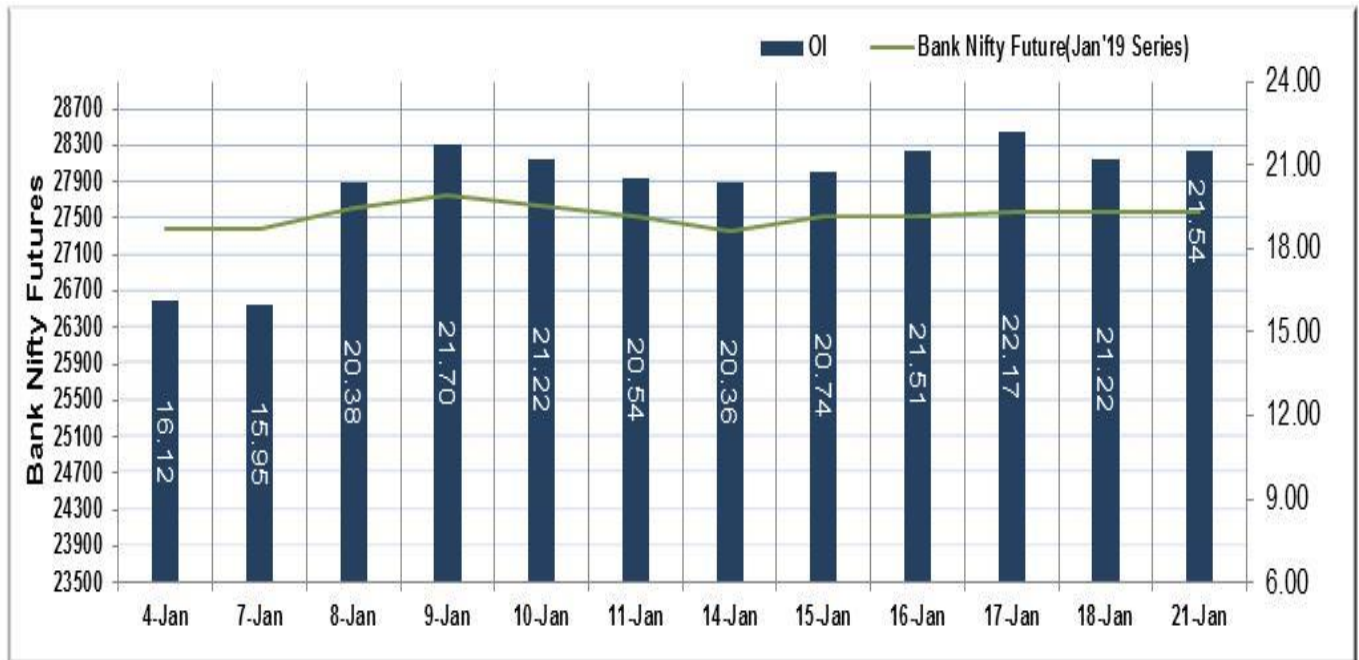
Market TO	Current	Previous	Net%
BSE CASH	2492	2456	1
NSE CASH	29055	27590	5
NSE FO	547130	1748183	(69)

FII Derivatives	Buy	Sell	Net
Ind. Futures	2390	1905	485
Ind. Options	68389	67744	645
Stk. Futures	12408	12020	389
Stk. Options	10850	11012	(162)

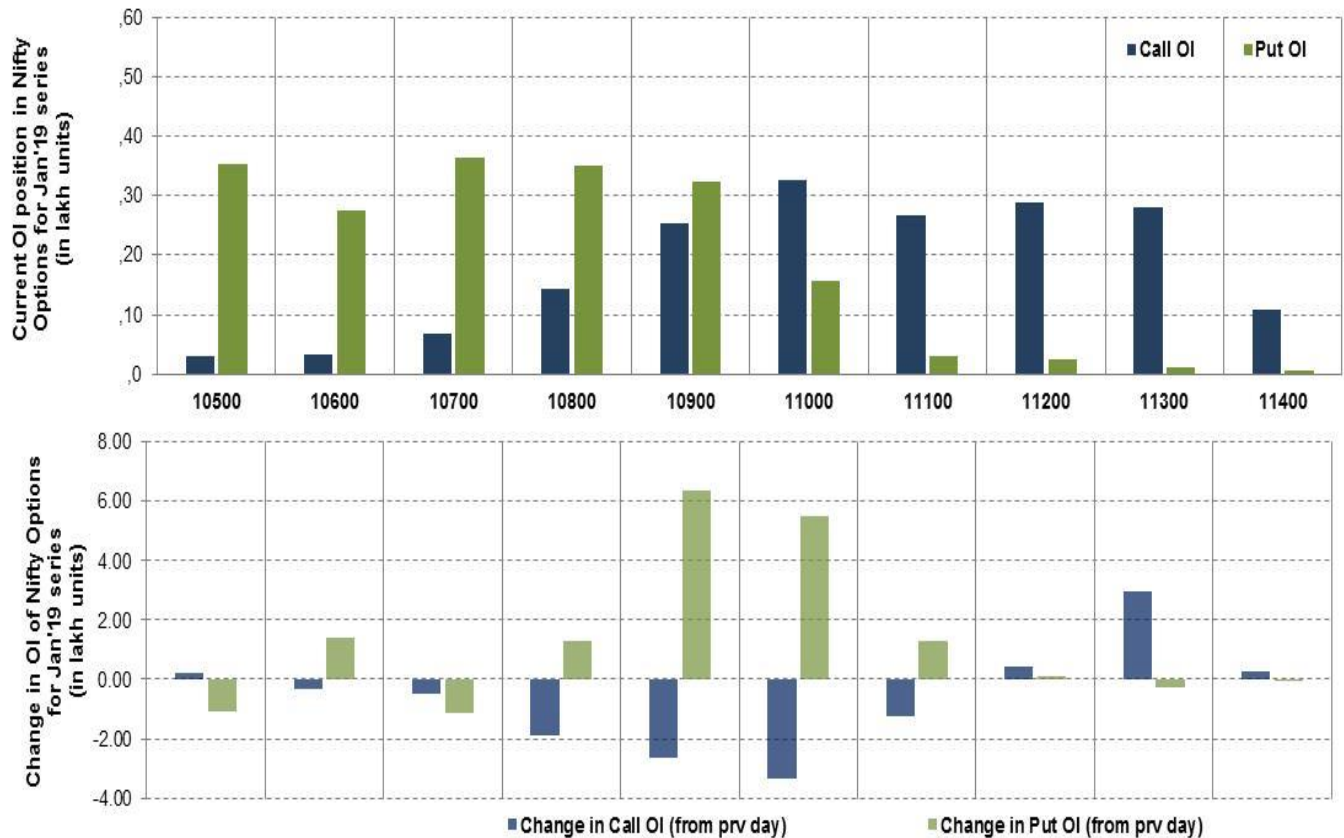
Nifty Futures



Bank Nifty Futures



Nifty Options



Note – Change in OI of Nifty Options refers to change from previous trading day
 Source-NSE, SIHL Derivatives Research (Institutional Equities)

- Among Nifty calls 11,000 SP from the Jan month expiry was the most active call with a reduction of 0.33 million in open interest.
- Among Nifty puts, 10,700 SP from the Jan month expiry was the most active put with a reduction of 0.11 million open interests.
- The maximum OI outstanding for Calls was at 11,000 SP (3.26mn) and that for Puts was at 10,700 SP (3.63mn)

Nifty Technical & Indices Levels

1-Nifty 50 - 21/01/19

Avg Avg



Nifty Cash prices have settled at 10961.85 up by 0.50 percent from the previous close. On the upper side it has resistance of 11050 and 11100 levels, while lower side it has support of 10900 and 10850 levels. Intraday traders should be cautious and take position accordingly.

Fresh Longs ↑ Open Interest ↑ Price					
Script	Prev. OI	Cur. OI	% Chg. OI	LTP	Price % Chg
SREINFRA	15,456,000	17,412,000	12.66	34.85	3.57
JUSTDIAL	2,718,800	2,935,800	7.98	475.50	0.38
SUNPHARMA	56,243,000	60,369,100	7.34	399.85	1.96
ASIANPAINT	6,745,200	7,168,200	6.27	1426.10	1.38
Short-Covering ↓ Open Interest ↑ Price					
Script	Prev. OI	Cur. OI	% Chg. OI	LTP	Price % Chg
ESCORTS	3,857,700	3,701,500	-4.05	734.80	0.49
OFSS	125,100	119,250	-4.68	3693.45	1.64
MOTHERSUMI	25,091,400	23,826,000	-5.04	163.10	3.13
KAJARIACER	3,090,100	2,852,200	-7.70	538.55	0.42
Fresh Shorts ↑ Open Interest ↓ Price					
Script	Prev. OI	Cur. OI	% Chg. OI	LTP	Price % Chg
BERGEPAIN	5,251,400	5,896,000	12.27	323.65	-1.08
UNIONBANK	35,742,000	38,472,000	7.64	86.15	-7.02
CHOLAFIN	922,500	990,000	7.32	1175.75	-0.36
JISLJALEQS	36,828,000	39,357,000	6.87	61.95	-4.40
Long Unwinding ↓ Open Interest ↓ Price					
Script	Prev. OI	Cur. OI	% Chg. OI	LTP	Price % Chg
LT	10,972,880	10,416,380	-5.07	1314.90	-0.48
DCBBANK	4,959,000	4,707,000	-5.08	183.30	-1.45
HINDPETRO	13,482,000	12,726,000	-5.61	239.25	-0.44
APOLLOHOSP	811,000	760,500	-6.23	1328.50	-2.26

Disclaimer:

The Information provided by SMS or in newsletter or in any document has been prepared by Shah Investor's Home Ltd (SIHL). The Information provided by SMS or in newsletter does not constitute an offer or solicitation for the purchase or sale of any financial instrument or as an official confirmation of any transaction. The information contained herein is from publicly available data or other sources believed to be reliable, but we do not represent that it is accurate or complete and it should not be relied on as such. SIHL or any of its affiliates/ group companies shall not be in any way responsible for any loss or damage that may arise to any person from any inadvertent error in the information contained in this report or SMS. This Information provided by SMS, reports or in newsletter is provided for assistance only and is not intended to be and must not alone be taken as the basis for an investment decision. The user assumes the entire risk of any use made of this information. Each recipient of this Information provided by SMS, report or in newsletter should make such investigation as it deems necessary to arrive at an independent evaluation of an investment in the securities of companies referred to in this information provided by SMS, report or in newsletter (including the merits and risks involved), and should consult his own advisors to determine the merits and risks of such investment. The investment discussed or views expressed may not be suitable for all investors. This information is strictly confidential and is being furnished to you solely for your information.

The information should not be reproduced or redistributed or passed on directly or indirectly in any form to any other person or published, copied, in whole or in part, for any purpose. The information provided by report or SMS is not directed or intended for distribution to, or use by, any person or entity who is a citizen or resident of or located in any locality, state, country or other jurisdiction, where such distribution, publication, availability or use would be contrary to law, regulation or which would subject SIHL and affiliates/ group companies to any registration or licensing requirements within such jurisdiction. The distribution of this Information provided by SMS or in newsletter in certain jurisdictions may be restricted by law, and persons in whose possession this Information provided by SMS or in newsletter comes, should inform themselves about and observe, any such restrictions. The information given or Information provided by SMS, report or in newsletter is as of the date of the issue date of report or the date on which SMS provided and there can be no assurance that future results or events will be consistent with this information. This information is subject to change without any prior notice. SIHL reserves the right to make modifications and alterations to this statement as may be required from time to time. However, SIHL is under no obligation to update or keep the information current.

Nevertheless, SIHL is committed to providing independent and transparent recommendation to its client and would be happy to provide any information in response to specific client queries. Neither SIHL nor any of its affiliates, group companies, directors, employees, agents or representatives shall be liable for any damages whether direct, indirect, special or consequential including lost revenue or lost profits that may arise from or in connection with the use of the information. Past performance is not necessarily a guide to future performance. The disclosures of interest statements incorporated in the Information provided by SMS, report or in newsletter are provided solely to enhance the transparency and should not be treated as endorsement of the views expressed in the report. The analyst for this report certifies that all of the views expressed in this report accurately reflect his or her personal views about the subject company or companies and its or their securities, and no part of his or her compensation was, is or will be, directly or indirectly related to specific recommendations or views expressed in this report.

About Us:

Shah Investor's Home Ltd (SIHL) is an ISO 9001:2008 Certified financial Services Company established in 1994 at Ahmadabad, Gujarat. Customer satisfaction is guaranteed through our diversified product portfolio, professional management and customer first attitude. SIHL was the first broking house in Gujarat with membership in National Securities Depository Ltd (NSDL) and was the first broking name providing services in NSE F&O in Ahmedabad. Today, SIHL ranks among the top most players in Gujarat in retail stock broking area with 45 branches, 350 franchisee across India and providing service to more than 1,25,000 clients.